



# SMOKE BARRIERS CATALOGUE

FK ROLL SMOKE / FK SMOKE

# PROTECTING AN AIRPORT OR A NUCLEAR POWER PLANT

„When I started the company, I did everything myself. Only a handful of other companies focused on buildings' fire safety back in the 90s Europe. I started developing my own products and built the company from scratch.

The drivers of our success are fire curtains, skylights and smoke and heat exhaust ventilation systems. We protect the Václav Havel Airport in Prague or a nuclear power plant in Slovakia; we are proud to have worked at the Louis Vuitton Foundation building in Paris and many more buildings and facilities.

And it does not stop there. We are constantly developing new innovative products and technologies to always stay one step ahead.“



**František Kregl**, founder and managing director

## We do it all. Development, installation, and maintenance



### Anyone can resell. We develop our products ourselves

Innovation is vital for us. We know we are doing it right when our competitors copy us.



### Fire protection advice for architects and engineers

We enjoy challenges and come up with customised solutions for unique and complex projects.



### High-quality components from Germany and Austria

We guarantee maximum reliability of our products thanks to high-quality components. Saving money on life and property protection is not worth it.



### Every project is priced individually with care and transparency

You always know your total costs in advance. We guarantee no unexpected price changes.



### Expert installation all across Czechia and Europe

Our experienced technicians take care of the installation. Our founder may even help out, if necessary.



### Long-term service and maintenance

Provided by certified technicians who are punctual, reliable and meet your deadlines.

# Smoke barriers for easier smoke extraction during a fire

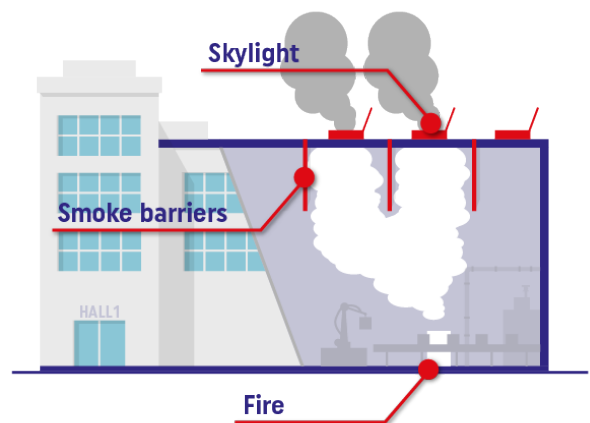
Smoke can be more dangerous than fire. With smoke barriers, you divide the space **into smaller smoke sections** which you can ventilate through smoke and heat exhaust ventilation (SHEV). We offer active smoke barriers FK ROLL SMOKE and passive smoke barriers FK SMOKE, both with a **European certificate**.



## How do our smoke barriers work?

Smoke barriers are usually installed in larger buildings of hundreds of square metres. They are **hanging from the ceiling**, anchored to the roof beams or directly into the roof.

In case of a fire, smoke barriers divide the space into smaller smoke sections. Each section should have its own smoke and heat extraction solution for smoke absorption.



# What makes our smoke barriers special



## Czech production and German components

We develop and manufacture smoke barriers on our own. All key components come from verified Czech or German suppliers.



## Customized solutions

Our smoke barriers can be anchored to any construction. We can even deal with pipes or cable routes going through the smoke barrier.



## Secured integration to fire ventilation

Our FK ROLL SMOKE active smoke barriers integrate with our fire ventilation systems in one control unit.



## Professional installation all across Czechia, Slovakia and Europe

Our team of experienced technicians install static and active smoke barriers.



## European CE certificate

Our smoke barriers have passed all relevant tests according to European directives. They are CE certified, which is the standard in the EU.



## Smoke spread prevention

We protect a power plant, an airport and a department store. We can propose a reliable and safe solution for you, too.

# Aesthetics or budget. What to base your decision on?

Smoke barriers are active and passive.

**Active smoke barriers** work in a way similar to fire shutters. When there is no fire, they are wound up in a box and not visible. They slide down in case of fire.

This solution is mainly **used for aesthetic reasons** (in shopping centres, supermarkets, railway stations, or airports). It is also helpful in case the smoke barrier would get in the way of a crane or any other heavy machinery.

**Passive smoke barriers** are generally used in industrial buildings such as warehouses or production halls. Unlike active ones, they are always in a lowered position. They do not need a control system which makes them less expensive.

Active smoke barrier remains hidden in the box and is barely visible. In the event of a fire, it will unwind and separate the smoke sections.



The passive smoke barrier remains in place at all times in the standby position. It can be disruptive indoors, but it is cheaper.



# FK ROLL SMOKE

## ACTIVE SMOKE BARRIERS



Active smoke barriers contain the spread of smoke for up to 30 minutes, thanks to their DH 30 fire resistance. Their advantage is that when the fire alarm is not active, the fabric is wound up in a box, **not disturbing the interior**. They are used in industrial and commercial buildings, but also e.g., in department stores, where they blend in perfectly thanks to colour variations and subtle design.

Most often, they are anchored into roof beams but can also be directly attached to the ceiling or to an auxiliary steel structure. They are usable almost everywhere.

# Why get FK ROLL SMOKE



## Invisible but reliable fire security

As long as there is no fire, the smoke barriers are rolled up in a box. Unlike fire curtains, the FK ROLL SMOKE do not even have side guides, thus not interfering with the interior design.



## Customized design

The box with the barriers can be made in any RAL colour, to make it fit in seamlessly into any space.



## Connection to the FDAS

If the smoke detectors detect a fire or if anyone presses the safety button, the smoke barrier's central unit releases its electromagnetic brake and the barrier slides down.



## Working even in the event of power failure

The FK ROLL SMOKE barriers include a backup power supply and work reliably even in the event of a power failure.

## Technical information FK ROLL SMOKE

Control unit power supply	230 V AC
Drive power supply	24 V DC
Fabric material	Fibreglass with polyurethane coating
Fabric colour	grey-silver
Fabric weight	460 g/m <sup>2</sup>
Maximum width	∞ m *
Maximum height	8 m
Material of the box	Galvanised sheet metal
Colour of the box	Any shade according to RAL **
Dimensions of the box	200 x 200 mm

\* Individual modules can be linked together to achieve unlimited length.

\*\* In the basic version the product is uncoated.

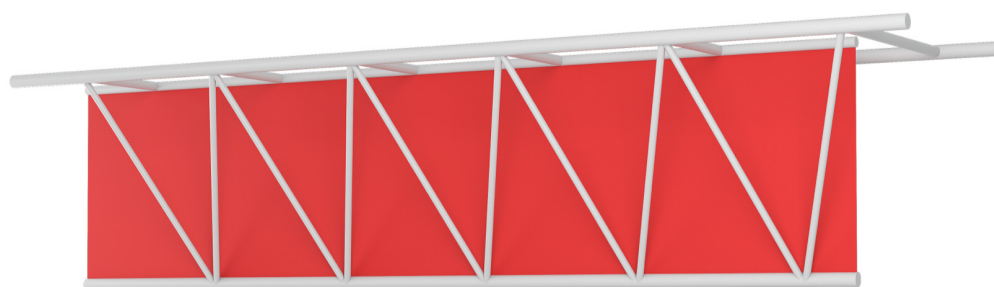
## Need more informations?

WE WILL BE HAPPY TO ADVISE YOU!

Contact our sales department by phone **+420 312 672 903**  
or by e-mail **sales@fkservis.cz**.

# FK SMOKE

## PASSIVE SMOKE BARRIERS



Unlike the FK ROLL SMOKE, the FK SMOKE smoke barriers are visible in both idle mode and fire alarm, dividing the building into smoke sections constantly. Their DH 30 fire resistance limits the spread of smoke for up to 30 minutes.

Passive smoke barriers are anchored directly into a concrete or steel structure. They are used in industrial buildings such as production halls or warehouses and easily adapt to places with cable trays, pipes or other technologies running under the roof.

## Why get FK SMOKE



### Permanent barrier against smoke spread

FK SMOKE stays in the desired position, it does not need to be lowered or connected to a power supply.



### Affordable and reliable security

FK SMOKE requires neither a box nor a control system, which makes it less expensive contrary to the FK ROLL SMOKE.



### Smoke barriers for steel and concrete

FK SMOKE barriers can be anchored into almost all types of structures. We will supply or recommend suitable anchoring elements based on the specific installation type.



### Solution adjusted to interior

FK SMOKE smoke barriers can be manufactured in any size and shape and are easily adjustable to obstacles such as pipes or cable trays.

## Technical information FK SMOKE

Fabric material	Fibreglass with polyurethane coating
Fabric colour	grey-silver
Weight of fabric	460 g/m <sup>2</sup>
Maximum width	∞ m *
Maximum height	∞ m

\* Individual modules can be linked together to achieve unlimited length.

## Need more informations?

**WE WILL BE HAPPY TO ADVISE YOU!**

Contact our sales department by phone **+420 312 672 903**  
or by e-mail **sales@fkservis.cz**.



# REFERENCES



## Mochovce Nuclear Power Plant

Mochovce, Slovakia (since 2016)

Two nuclear power plant units are protected by our smoke barriers and smoke and heat exhaust ventilation systems, manufactured in the above-standard dimensions. This solution was very challenging for us due to strict fire safety requirements.



## Baumax department stores

Our fire shutters and smoke barriers protect Baumax department stores all across Czechia and Slovakia.



## Škoda Auto

We also protect the Czech automotive industry. Our fire shutters are installed in the automobile manufacturer in Mladá Boleslav.





## C-Energy Planá

Water mist fire extinguishing systems protect big turbines that would be irreversibly destroyed by regular water sprinkler systems.



## Louis Vuitton Foundation Gallery

Paris, France (since 2011)

We designed a fire ventilation system for this atypical building, according to relevant French standards. Within two months, we helped the Paris team solve a problem that they had been stuck on for two years.



## Václav Havel Airport

We developed unique aluminium facade windows for Terminal 2 at Václav Havel Airport in Prague, designed for smoke and heat extraction. Moreover, the airport is equipped with our fire curtains.



## Lidl Logistics Centre

Our electrically operated louvre windows keep the freezers' temperature low and they extract smoke in case of a fire.



# WHEN DO WE START?

**Get in touch** with our sales department – we will ask you a few questions to learn more about your situation and find ways of helping you.

For smaller-scale collaborations, we send a price quote right away. For larger projects, we prefer to meet and review your plans or a completed construction first. After that, we make you a tailor-made project quote and suggest our work schedule – so everyone knows what to expect. Who is doing what, how, when and for how much.

We provide solutions for property owners and managers, business managers, developers, designers and architects. We focus on the part of the project you require and walk you through the whole process.

We look forward to working with you.



[sales@fksevis.cz](mailto:sales@fksevis.cz)



+420 312 672 903

**Find out what you need** —> **Make an offer** —> **Implement** —> **Provide a long-term service**

# FIRE SAFETY OF BUILDINGS. FROM DESIGN TO IMPLEMENTATION



Textile fire curtains



Controlled Natural Ventilation (CNV)



Textile smoke barriers



Water mist extinguishing systems



Fire stoppings



Hydrants



Smoke and Heat Exhaust  
Ventilation (SHEV)



Fire extinguishers

## Sales department

+420 312 672 903

[sales@fkservis.cz](mailto:sales@fkservis.cz)