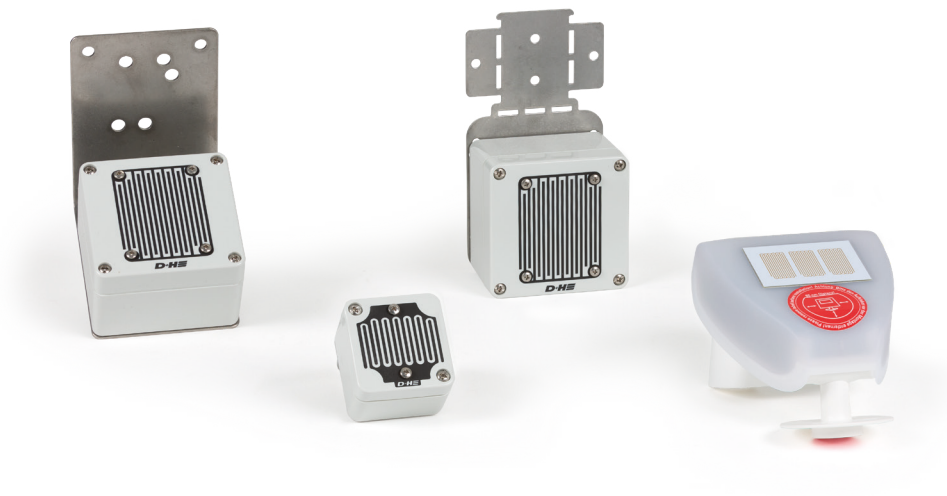


VRS / REM / WRS



Performance features

- » Suitable for connecting to all D+H SHEV and ventilation control panels
- » Also available with radio signal (REM 801-RC)
- » Flexible installation
- » Integrated wind signal emitter (optional)

Type	Art. No.	Description	Technical data
------	----------	-------------	----------------

VRS 10

30.300.90

Rain detector



- » For rain monitoring of ventilation flaps in conjunction with 24 V DC SHEV and ventilation control panels
- » Rain signal is stored for approx. 2 minutes (rain hold time)
- » Rain sensor in compact design, 24 V DC
- » Heated sensor area

Supply	24 V DC / 0.05 A
Type of protection	IP 65
Temperature range	-20 °C ... +60 °C
Housing	Polycarbonate
Colour	Grey (~ RAL 7035)
W x H x D	50 x 70 x 66 mm
Weight	0.40 kg

Type	Art. No.	Description	Technical data
------	----------	-------------	----------------

REM 42

30.301.00

Rain detector



- » For rain monitoring of ventilation flaps in conjunction with 24 V DC drives and D+H control panels
- » Rain signal is stored for approx. 2 minutes (rain hold time)
- » Heated sensor area

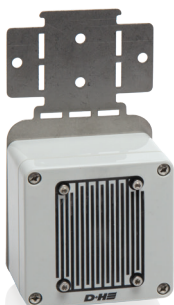
Supply	24 V DC / 0.2 A
Type of protection	IP 65
Temperature range	-20 °C ... +60 °C
Housing	Polycarbonate
Colour	Grey (~ RAL 7035)
W x H x D	85 x 150 x 110 mm
Weight	0.50 kg

Type	Art. No.	Description	Technical data
------	----------	-------------	----------------

REM 801-RC

30.302.20

Wireless rain detector



- » Presence monitoring in wireless operation
- » Signal output via radio or switching contact
- » Integrated test function for controlling the reception quality
- » Rain signal is stored for approx. 5 minutes (rain hold time)
- » Heated sensor area (not possible in battery operation)

Input voltage	24 V DC
Type of protection	IP 33
Temperature range	-20 °C ... +60 °C
Transmitter range	Max. 100 m free field
Radio frequency	868.3 MHz / FSK
Housing	Polycarbonate
Colour	Grey (~ RAL 7035)
W x H x D	80 x 82 x 55 mm
Weight	0.50 kg

Type	Art. No.	Description	Technical data													
WRS-S	70.602.17	Wind rain sensor <ul style="list-style-type: none"> » Wind switching threshold via DIP switch configurable from 1 m/s to 30 m/s » Rain signal is stored for approx. 5 minutes (rain hold time) » Signal retention time of the wind signal for approx. 10 minutes » Heated sensor area » Incl. mast and wall mounting 	<table border="1"> <tr> <td>Input voltage</td> <td>24 V DC</td> </tr> <tr> <td>Type of protection</td> <td>IP 44</td> </tr> <tr> <td>Temperature range</td> <td>-30 °C ... +50 °C</td> </tr> <tr> <td>Housing</td> <td>Plastic</td> </tr> <tr> <td>W x H x D</td> <td>96 x 77 x 118 mm</td> </tr> <tr> <td>Weight</td> <td>0.18 kg</td> </tr> </table>	Input voltage	24 V DC	Type of protection	IP 44	Temperature range	-30 °C ... +50 °C	Housing	Plastic	W x H x D	96 x 77 x 118 mm	Weight	0.18 kg	
Input voltage	24 V DC															
Type of protection	IP 44															
Temperature range	-30 °C ... +50 °C															
Housing	Plastic															
W x H x D	96 x 77 x 118 mm															
Weight	0.18 kg															



Type	Art. No.	Description	Technical data					
AMB	70.600.05	Antenna mast mounting <ul style="list-style-type: none"> » Suitable for installation to an antenna mast for diameters of 42 to 60 mm 	<table border="1"> <tr> <td>Colour</td> <td>Silver</td> </tr> <tr> <td>Weight</td> <td>0.35 kg</td> </tr> </table>	Colour	Silver	Weight	0.35 kg	
Colour	Silver							
Weight	0.35 kg							

